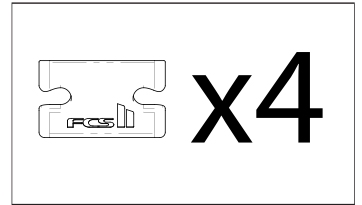
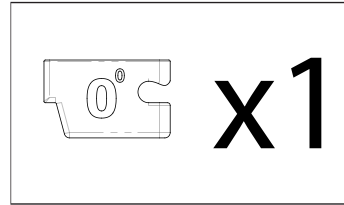


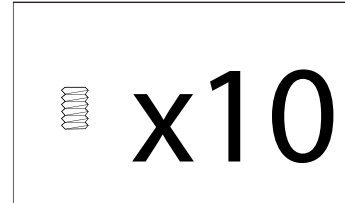
FCS TAB INFILL KIT

These components can be used when adapting the new FCS II system to fit standard dual tab fins.

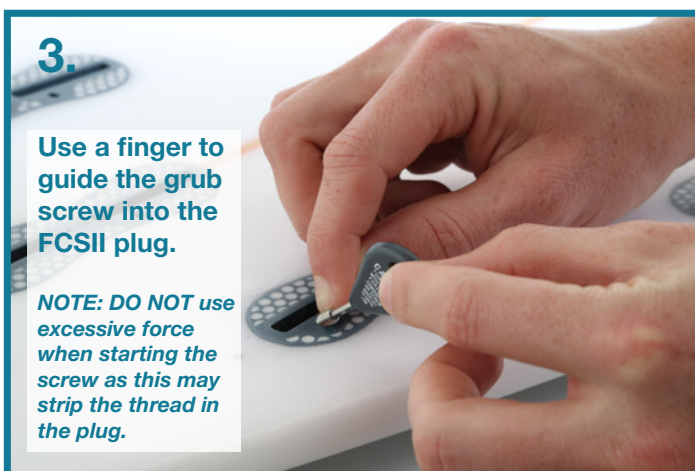
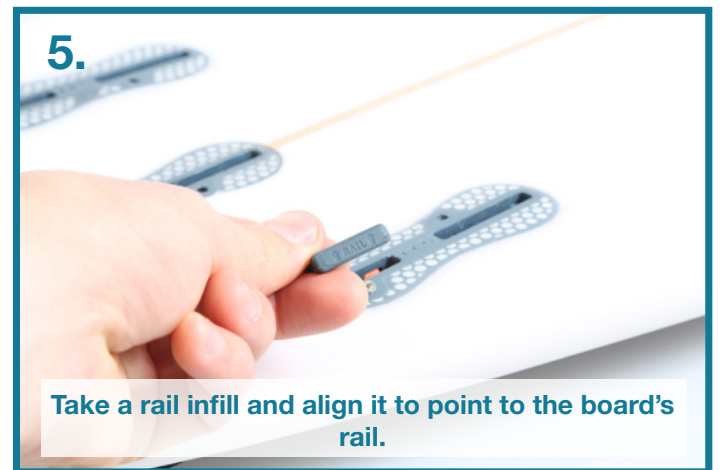
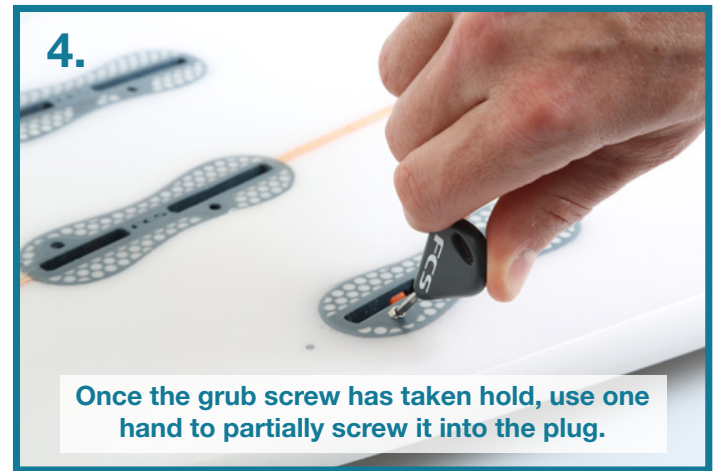
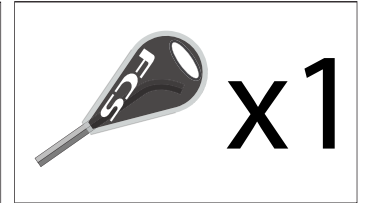
FCSII COMPATIBILITY INFILL - Centre FCSII COMPATIBILITY INFILL - Side



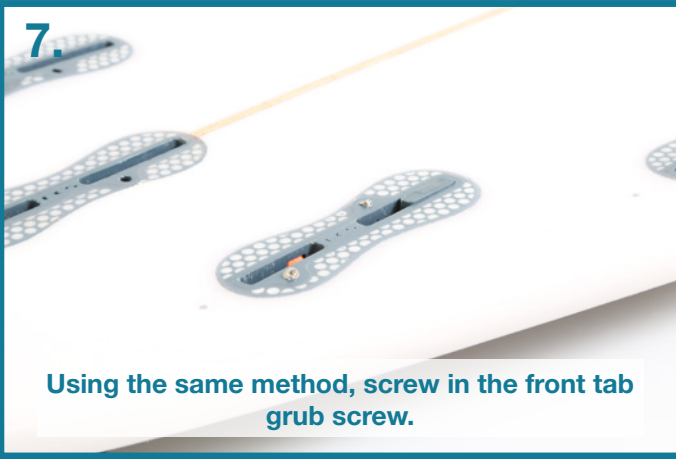
FCS GRUB SCREW



FCS KEY



7.



Using the same method, screw in the front tab grub screw.

8.



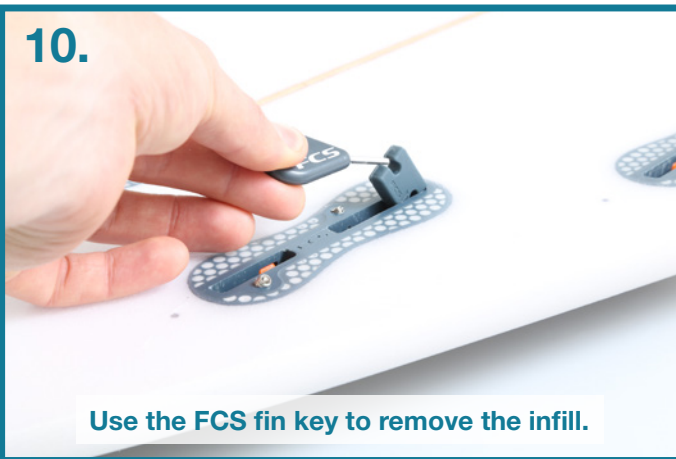
Insert the FCS 2 tab fin.

9.



Screw the grub screw down into the fin.

10.



Use the FCS fin key to remove the infill.